



WKS[®]
Home of the SCS Prover[®]

We make pipe smart



Three Run PD Meter Skid

Three run 10" ANSI 600 PD meter skid, 9000 BPH with 16x24 SCS Prover® for East Texas.



Three Run PD Meter Skid

CUSTODY TRANSFER OIL & GAS



Three run 4" ANSI 150 coriolis metering system for West Texas.



Portable SCS Prover® for Nigeria



SCS Prover® and multiple coriolis meter skids for Oklahoma.

ISO 9001



Three run 6" ANSI 600 PD meter skid, 50,000 BPD with 16x20 SCS Prover® for Nigeria.

90 MMSCF/Day Gate station with scrubber, coalescer, gas meter skid, pressure reduction, heater, and control panel.



City Gate Station

SCS PROVER®

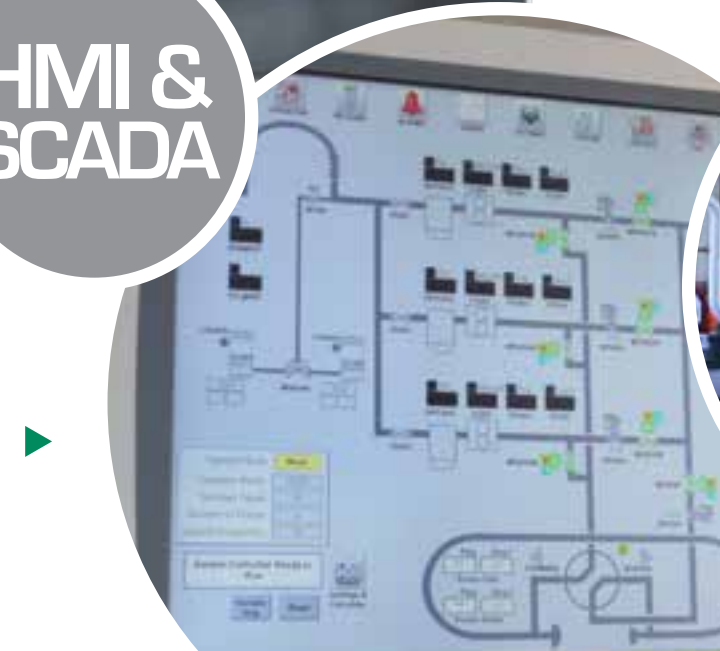
U.S. PATENT
8,505,355
9,316,527
9,581,486
9,719,837

UL 508 APPROVED MANUFACTURER

HMI & SCADA

Control Panel Capabilities

UL 508 Approved Manufacturer
Control Panels built to NFPA 79 with capabilities to design to NFPA 496 and integration of HMI & SCADA systems.



MANUFACTURING FACILITY

Our enclosed fabrication area is over 12,000 square feet with over 4 acres, much of it paved, for assembly and storage. Panel fabrication is done in a heated and cooled area.

SHIPPING CAPACITY

We are located on a major four lane thoroughfare with connections to major highways. Shipping by rail, ship, and air facilities are close by.

SUBCONTRACTED SERVICES

Approved subcontractors services are provided by third party X-ray and UT testing, sand blasting and painting, insulation, and export packing and shipping contractors.



Ultrasonic Gas Meter Skid with Housing



wfms
Home of the SCS Prover®

OUR SPECIALTIES



OIL AND NATURAL GAS INDUSTRY

Liquid metering systems using positive displacement, turbine, helical, coriolis and/or ultrasonic meters, Strainers, Air eliminators, Measurement control panels with HMI (Human Machine Interface) and SCADA systems (Supervisory Control and Data Acquisition System), Control Buildings, Sample systems, Heaters, and Pig launchers and receivers for use in crude oil and natural gas pipelines.



NATURAL GAS INDUSTRY

Natural gas filters, Filter separators, Coalescing filters, Orifice meter runs, Proving Systems, Natural gas metering systems using orifice, ultrasonic, turbine and coriolis meters, GATE stations (Pressure regulating systems, and City gas automatic transfer equipment).



OIL INDUSTRY

ASME (American Society of Mechanical Engineers) code stamped pressure vessels including Crude oil sample containers, Bi-directional sphere meter provers for crude oil and refined product, Lease automatic custody transfer units (LACT Units), and Fuel conditioning systems for internal combustion engines and natural gas turbines.

WFMS provides expertise in all phases of a project, from concept design through fabrication, to delivery, start up and maintenance. WFMS is a unique measurement design, fabrication company dedicated to the manufacture of high-quality, precision flow measurement system for liquids and gas. WFMS has in house capability to design and manufacture all the mechanical, electrical, instrumentation for a project. WFMS supplies everything required from pipe fabrication to complete control panels with HMIs, control rooms and SCADA.

WFMS can supply everything needed for all your
Oil and Gas Measurement Needs.



13901 West Belfort
Sugar Land, TX 77498
p. 281-491-2445
f. 281-491-2455
sales@wfmsinc.com
wfmsinc.com